



AIRBOX™

PEAK SERIES - S



**PRODUCT GUIDE
& SPECIFICATIONS**

The Apex Unit is a one-of-a-kind industrial-grade air purifier with the power to clean the constant expulsion of particles into our air in larger commercial spaces, especially high-traffic locations. Like the name suggests, the Apex Series is the pinnacle of clean air technology. Integrated with the same technology as many high-profile, high-tech clean rooms in the country, the Apex Series provides the purest air money can buy.

INTEGRATED CLEAN-ROOM TECHNOLOGY

The Apex Series is equipped with the same type of Fan Filter Unit that is used in many high-profile, high-tech clean rooms around the country. This fan technology integrates a built-in HEPA filter. Whatever your application, the Apex Series will surely exceed your clean air expectations as it meets all International Organization for Standardization (ISO) Standards for commercial clean rooms.

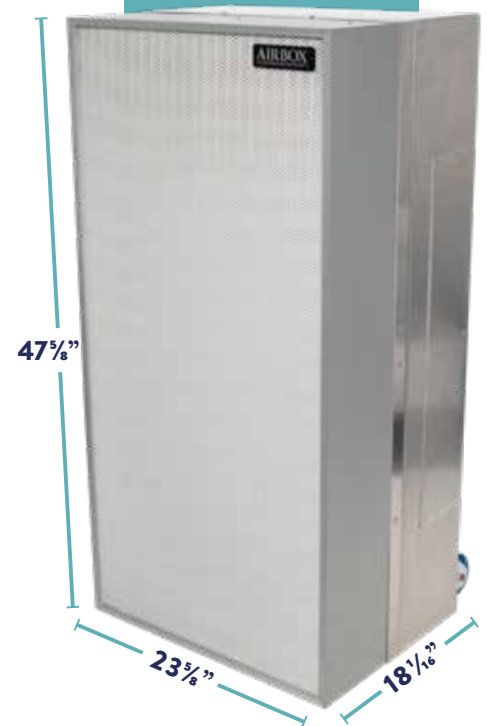
MOBILE, STATIONARY, OR SUSPENDED - YOU CHOOSE

The Apex Series can be suspended from the ceiling using steel quarter-inch 20 all thread or can be placed standing upright on the ground. The unit is also portable with heavy-duty casters for ease of movement to high-traffic areas.

HIGH-STRENGTH BRUSHED ALUMINUM CASING

Proudly built in the USA, the quality of materials used to construct the Apex Series allows it to withstand the most brutal conditions and environments. Rest-assured knowing the Apex Series will provide a lifetime of clean air.

DIMENSIONS



IDEAL LOCATIONS TO PURIFY



RESTAURANTS
& COMMERCIAL
KITCHENS



GYMS &
FITNESS
CENTERS

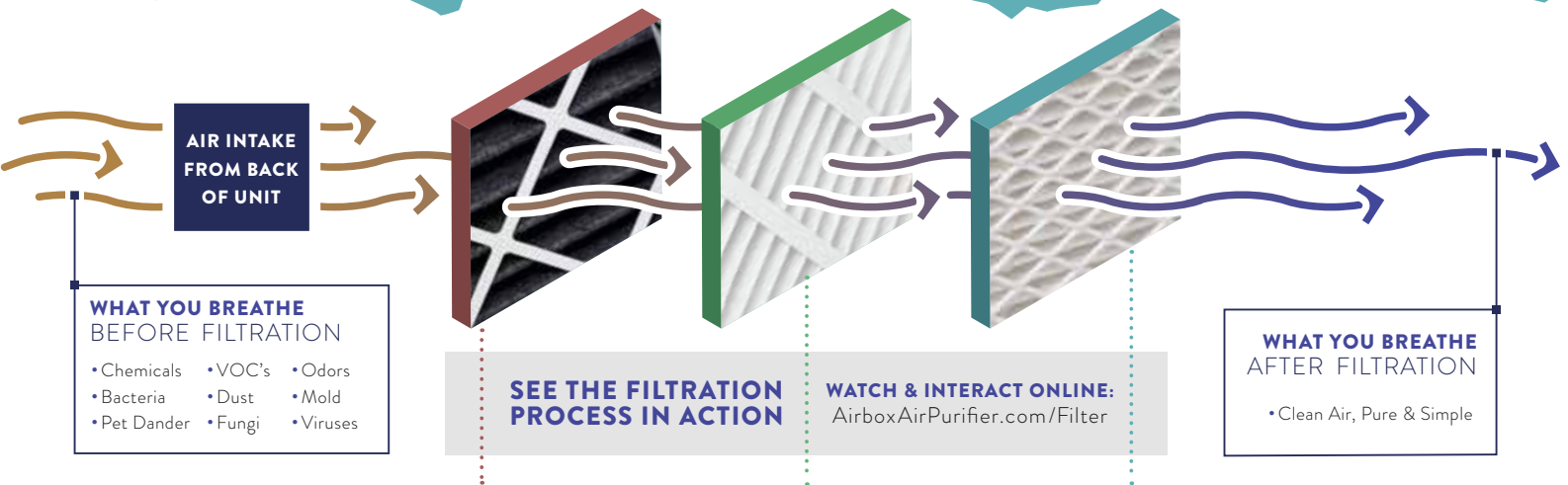


SCHOOLS
& DAYCARE
CENTERS



MOLD
REMEDIAL
SERVICES

STATE-OF-THE-ART AIR FLOW & FILTRATION



1

ODOR SHIELD

ACTIVATED CARBON FILTER

When passing through the Activated Carbon Filter the air is cleansed of Chemicals, Volatile Organic Compounds (VOC's), Bioeffluents, and Unpleasant Odors. Unique to our activated carbon filter, the carbon particles are prevented from releasing downstream into the other filters, dramatically increasing the Apex Series effective life cycle.



EXTREME ODOR SHIELD

can be purchased - heavyweight carbon filter cleans even the worst air situations.

2

GERM PROTECTION

ANTIMICROBIAL FILTER

The Apex Series Antimicrobial Filter is 99.9999% effective at capturing and inhibiting the growth of airborne microbes. A microbe is a living thing that is too small to be seen with the naked eye. Many of these airborne microbes can be harmful (and in some cases deadly) to humans, including: Bacteria, Protists, Fungi, Viruses, and Microscopic Plants & Animals.

3

PURIFYING HEPA

CERTIFIED HEPA FILTER

High Efficiency Particulate Air (HEPA) filters are the World Standard for the provision of "Clean Air". This HEPA filter is 99.99% effective in removing particulate size of 0.3 micron and even more effective in capturing smaller particles.

Unique to the Apex Series HEPA is the Controlled Media Spacing which enables the unit's high-flow capacity.



PERFORMANCE SPECS

Power Level	Watts	Cubic Feet Per Minute	Cubic Feet Per Hour	Decibels
Low	189	720	43,200	54
Med	207	800	48,000	57
High	245	880	52,800	59

MAX FLOW RATE

6,600 SQUARE FEET PER HOUR
OR
52,800 CUBIC FEET PER HOUR



NEED TO ORDER NEW FILTERS?

You are able to order new filters online as well as set-up a reoccurring delivery of filters when changing is recommended. For more information please visit us online at: AirBoxAirPurifier.com/Order-Filters



PURCHASING & LEASING OPTIONS AVAILABLE

For more information, please speak to an AirBox sales representative.



5 YEAR WARRANTY ON MATERIALS & CRAFTSMANSHIP

As American Craftsmen, AirBox stands by our product with a 5 year warranty on materials and craftsmanship as well as a 5 year warranty on the HEPA Filter* and the Fan & Motor Package inclusive of electrical circuitry.

* 5 Year HEPA Warranty only valid if subscribing to AirBox's Clean Air For Life Program. Please inquire for details.

AIRBOX™
CLEAN AIR. PURE & SIMPLE.

2612 LARCH LANE UNIT 110
MT. PLEASANT SC 29466

(512) 968-5496
AIRBOXAIRPURIFIER.COM

